

Rice County 4-H Newsletter

May 2020 Edition

Updates & Reminders

OZSOME CAMP is right around the corner! Since we cannot visit Rock Springs 4-H Ranch, we are holding a virtual "Oz"some 4-H Camp Connection for 4-H'ers 8-13 years of age this year. The Camp Connection will be held June 16-18 (Tues-Thurs) from 6-9 PM each evening.

Your 4-H'er can look forward to fun, interactive activities each evening (learning, campfire, 4-H dance, etc). There will still be opportunities to connect with other campers in camp groups and there will be camp counselors as well! Each participant will receive a camping kit in the mail that will include a t-shirt, craft supplies and other items needed for most of the activities.

The following survey link allows you to register for this fun virtual experience at a low cost (the cost to you is only \$5!) The Rice County 4-H Council has agreed to pay \$10 towards these fees if you write a short note of thanks or a kind word for sponsoring.

https://kstate.qualtrics.com/jfe/form/SV_100FmCbV8AnT6cJ

JR LEADERS:

We are still in need of counselors to lead these groups. Counselors must be 14 years of age or older. If you need credits for pin applications, **HERE IS YOUR CHANCE!** Contact Wendy! Counselors will also receive a kit and a t-shirt. We will go over the kit and have "training" on Monday June 15th.

If you have problems or questions, please contact Wendy or Katie. See you at camp!

Rice County 4-H Fair

At this time, we still have no answer as to if we will have a full fair. We are still moving ahead with planning as if a full fair will take place. We are also making plans to have a partially virtual fair. We should have the fair book out **ONLINE** by Monday. Please remember times and schedule are subject to change. The rules for each project will still be the same.



Tidbits from the **Better Kansas Blog** by Mary Lou Peter

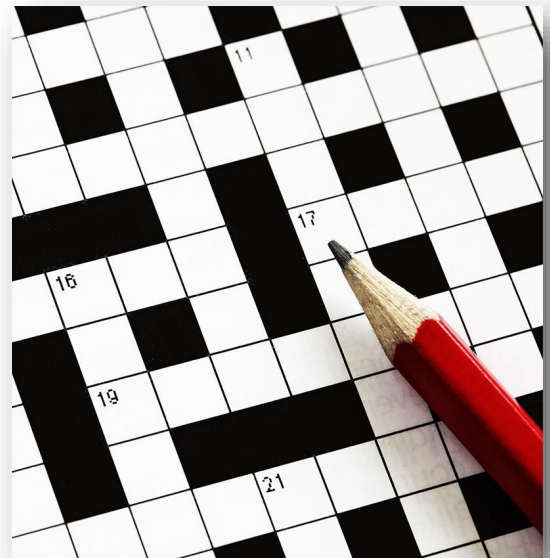
FASCINATED BY THE WEATHER?

Consider becoming a volunteer weather reporter through CoCoRaHs, the Community Collaborative Rain, Hail and Snow Network. It's a non-profit network of volunteers of all ages and backgrounds, working together to measure and map precipitation in the form of rain, hail or snow. Volunteers from across the United States and several other countries measure precipitation and input the data on the network's website. This would be a fantastic family project. The data is used by the National Weather Service, meteorologists, emergency managers and others. Learn about [CoCoRaHs](#) through the Weather Data Library based at Kansas State University: https://webapp.agron.ksu.edu/agr_social/article_new/become-a-volunteer-weather-reporter-in-kansas-join-the-cocorahs-network-384-8



LOOKING FOR SOMETHING TO KEEP THE CHILDREN OCCUPIED?

Or maybe you just enjoy crossword puzzles. In looking for something else, I happened upon this energy crossword (<https://kansasenergyprogram.org/sites/kansasenergyprogram/files/DOCUMENTS/Games/ElectricityCrosswordPuzzle.pdf>) on the **Kansas Energy Program's** webpage (<https://kansasenergyprogram.org/>) that I thought you might like. Also, on the page are energy-related resources for small businesses, teachers, government facilities and programs for wind and solar power. The Kansas Energy Program is a collaboration between K-State, the Kansas Corporation Commission, the U.S. Department of Energy and the National Renewable Energy Laboratory.

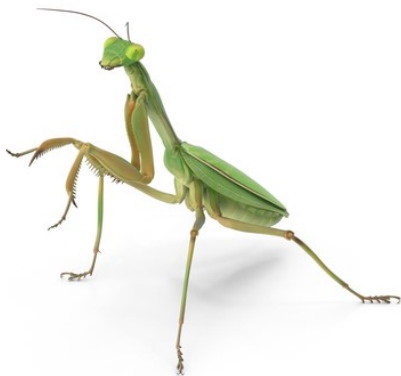


SUDDENLY IN CHARGE is a new place to find a lot of resources available for teens, tweens or anyone taking care of young children (<https://www.ksre.k-state.edu/families/suddenly-in-charge/>) Since I wrote about it last time, numerous new resources have been added including one on Community Outreach (<https://bookstore.ksre.ksu.edu/pubs/MF3510.pdf>) with suggestions for making May Day baskets or something similar at other times of the year. Consider including a roll of toilet tissue! Sometimes, we need a reminder about the little things that go a long way toward staying connected and showing we care – especially important right now. If you’re reading this after May Day, any day is good for you and the children you’re caring for to show your appreciation for others – what a lesson for those kiddos. The resource is available in English and Spanish.



BUG SEASON IS BACK!

Entomologists would likely say it never left, but we are sure to have more face-to-face activity now that the weather is warming. An interesting one is what the scientists call the praying mantid, known to the rest of us as the **praying mantis**. Apparently, they’re not very picky about what they eat, which makes them a good companion (but not for other insects) to have in the garden. Check out the praying mantid section of the April 24, 2020 Kansas Insect Newsletter (<https://entomology.k-state.edu/doc/extension-newsletters/2020/KSIsectNewsletter%203.pdf>). You can actually buy praying mantis egg cases?!? Anybody remember Rally Mantis (<https://www.mentalfloss.com/article/85449/praying-mantis-has-become-kansas-city-royals-good-luck-charm>), the KC Royals short-lived (literally) mascot? A brief moment of fun in an otherwise disappointing season. I even had a Rally Mantis T-shirt. Who knew I’d ever be writing about this?!





IT'S THE TIME OF YEAR WHEN CHICKS CAN BE FOUND at farm stores and other locations, but recent stories in the New York Times (<https://www.nytimes.com/2020/03/28/style/chicken-eggs-coronavirus.html>) and others indicate that chicks are in greater demand this year than usual. Apparently, we want to buy chicks during stock market downturns and presidential election years... there's an appeal to gathering our own eggs rather than hope the grocery store has them – not always a sure thing during this pandemic. If you're among the lucky people who recently bought or are raising a few chickens, Management of the Small Flock of Chickens (<https://bookstore.ksre.ksu.edu/pubs/MF2390.pdf>) will come in handy. Also, take a look at the poultry page (<https://www.asi.k-state.edu/research-and-extension/poultry/>) on K-State's Department of Animal Sciences and Industry page for information on poultry and what the university does to help producers, from large scale operations to your own backyard flock. I just learned that crooked toes can be caused by a riboflavin deficiency – in chickens, mind you!

PORTIONS OF THE WHEAT STATE (AKA KANSAS!) experienced freezing weather in mid-April, which injured some of the crop. The wheat was in different stages of development in various parts of the state, which makes a difference to the freeze's effect. The variety of wheat planted back in the fall also made a difference, with some varieties that came out of dormancy earlier this spring showing more damage than those that came out later. The April 24, 2020 Agronomy eUpdate (https://webapp.agron.ksu.edu/agr_social/issue_new/k-state-agronomy-eupdate-issue-796-fri-apr-24-2020) gets into the nitty gritty. As of April 26, USDA's National Agricultural Statistics Service rated Kansas winter wheat as 5% excellent, 35% good, 40% fair, 15% poor and 5% very poor. The Agronomy eUpdate also includes information about soybean planting, including recommendations for planting dates, effect of row spacing on crop yield and more.



Upcoming Events

May

25 - Office Closed, Memorial Day

June

4 - Wear your 4-H shirts!

16-18 - VIRTUAL "Oz"some Camp

July

4 - Wear your 4-H shirts!

9-16 - Rice County 4-H Fair

August

4 - Wear your 4-H shirts!

6 - KS 4-H Wheat Expo, Wichita

15 - Horticulture Judging Contest, KSU

22/23 - 4-H Livestock Sweepstakes, Manhattan

September

4 - Wear your 4-H shirts!

7 - Office Closed, Labor Day

11-20 - KS State Fair, Hutchinson

